

## Large Capacitance MLCCs (Large Size)

### Features



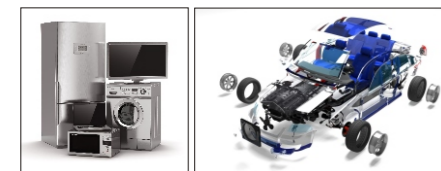
### [ High Reliability ]

- \* Stable X7R, X7S Dielectrics
- \* 0805–1210 inch / 2012–3225 mm
- \* RoHS Compliant

### Product Family

Part Number	Size		WVDC (V)	Dielectric Material	Capacitance
	EIA (inch)	JIS (mm)			
ACS05X06N226KNLG	0805	2012	6,3	X7R	~22uF
ACS05X10N226KNLG	0805	2012	10	X7R	~22uF
ACS05X16N226KNLG	0805	2012	16	X7R	~22uF
ACS05X25N106KNLG	0805	2012	25	X7R	~10uF
AC205X35N475KNLG	0805	2012	35	X7S	~4.7uF
ACS05X50N105KNLG	0805	2012	50	X7R	~1.0uF
AC205X50N475KNLG	0805	2012	50	X7S	~4.7uF
AC205X1BN105KNLG	0805	2012	100	X7S	~1.0uF
ACS06X10N106KNLG	1206	3216	10	X7R	~10uF
AC206X10N226KNLG	1206	3216	10	X7S	~22uF
ACS06X16N226KNLG	1206	3216	16	X7R	~22uF
AC206X25N106KNLG	1206	3216	25	X7S	~10uF
ACS06X35N106KNLG	1206	3216	35	X7R	~10uF
ACS06X50N475KNLG	1206	3216	50	X7R	~4.7uF
AC206X1BN475KNLG	1206	3216	100	X7S	~4.7uF
ACS10X10N476KFLG	1210	3225	10	X7R	~47uF
ACS10X16N476KFLG	1210	3225	16	X7R	~47uF
ACS10X25N226KNLG	1210	3225	25	X7R	~22uF
ACS10X35N106KNLG	1210	3225	35	X7R	~10uF
ACS10X50N106KNLG	1210	3225	50	X7R	~10uF
AC210X1BN106KFLG	1210	3225	100	X7S	~10uF

### Applications

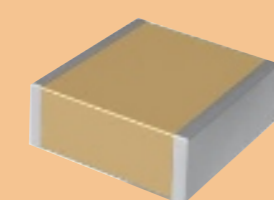


- \* EV Powerline
- \* DC/DC converter
- \* High Voltage DC-Link, Snubber

7

## High Power MLCCs (Ni COG based)

### Features



### [ High Temperature & High Voltage ]

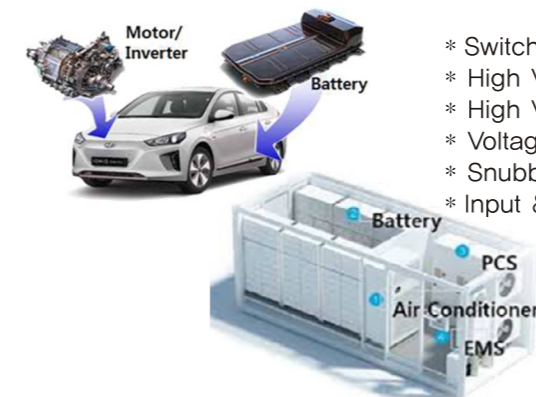
- \* High Temperature Operation to 150°C
- \* RoHS Compliant
- \* Highly Stable Over Temperature
- \* No piezoelectric noise

### Product Family

Part Number	Size		WVDC (V)	Capacitance
	EIA (inch)	JIS (mm)		
ACC06X1CN102JNLA	1206	3216	1,000	~1.0nF
ACC10X2BN473JNLA	1210	3225	200	~47nF
ACC20X5BN103JNTA	2220	5750	500	~10nF
ACC20X1CN683JNTA			1,000	~6.8nF
ACC25X5BN473JNTA	2825	7060	500	~47nF
ACC25X1CN103JNTA			1,000	~10nF
ACC40L5BN224JNTA	3640	90100	500	~220nF
ACC40L1CN473JNTA			1,000	~47nF

### Applications

- \* Automotive Powertrain & Industrial Power Systems

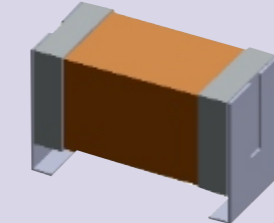


- \* Switching Mode Power Supplies
- \* High Voltage Coupling
- \* High Voltage DC Blocking
- \* Voltage Multiplier Circuitry
- \* Snubber Circuits
- \* Input & Output Filtering

8

## High Power MLCCs (X7T-Metal frame)

### Features



### [ Superior DC Bias ]

- \* Superior DC bias characteristics
- \* Excellent ripple current characteristics

### Product Family

Part Number	Size		WVDC (V)	Capacitance	Type
	EIA (inch)	JIS (mm)			
AC306X2BN600KNLAS	1206	3216	250	~0.06nF	
AC306X6BN151KNLAS	1206	3216	630	~0.15nF	
AC310X2BN151KNLAS	1210	3225	250	~0.15nF	
AC310X6BN470KNLAS	1210	3225	630	~0.047nF	
AC312L2BN301KNTAS	1812	4532	250	~0.3nF	
AC312L6BN680KNTAS	1812	4532	630	~0.068nF	
AC320L2BN102KNTAS	2220	5750	250	~1.0nF	
AC320L6BN221KNTAS	2220	5750	630	~0.22nF	
AC320L2BN102KMTAS*	2220	5750	250	~1.0nF	Metal
AC320L6BN221KMTAS*	2220	5750	630	~0.22nF	Frame
AC320L2BN222MMTAD*	2220	5750	250	~2.2nF	Metal
AC320L6BN561MMTAD*	2220	5750	630	~0.56nF	Frame

### Applications

- \* Automotive Infotainment & IT Power Systems



- \* Switching Mode Power Supplies
- \* Voltage Multiplier Circuitry
- \* Input & Output Filtering

9

## Global Contacts



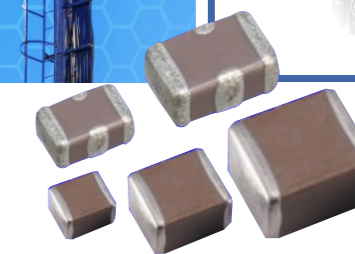
USA	Email	jims@amotech.co.kr
	Address	4010 Moorpark Ave #224 San Jose, CA 95117
CHINA	Beijing	
	Email	hana_jin@amotech.com.cn
	Tel.	+86-10-6467-6066
	Address	Room 1558 Jiamei Centre, Guangshun South Street, Chaoyang District, Beijing
		北京市朝阳区广顺南大街16号嘉美中心1518
	Shanghai	
Email	vicky_lee@amotech.com.cn	
Tel.	+86-21-5238-8919	
Address	Room 403, No.28 Xuanhua Road, Changning district, Shanghai	
	上海市长宁区宣化路28号403室 (舜元企业发展大厦B栋)	
Shenzhen		
Email	melissa@amotech.com.cn	
Tel.	+86-755-8250-7964	
Address	Room 6102, 1st Building, XunMei Science and technology Plaza, 8th of Keyuan Middle Road, Nanshan District, Shenzhen	
	深圳市南山区科技园科苑中路8号讯美科技广场1号楼6102室	
KOREA	Email	esd-emi@amotech.co.kr
	Tel.	+82-2-542-0951
Address	56, Naruteo-ro, Seocho-gu, Seoul, Republic of Korea	

5BL-1Lot, 617, Namchon-Dong, Namdong-Gu, Incheon  
Tel : +82. 32. 821. 0363 Fax : +82. 32. 811. 0283  
[www.amotech.co.kr](http://www.amotech.co.kr)

10

V02072021

[www.amotech.co.kr](http://www.amotech.co.kr)



**AMOTECH**  
Ceramic Capacitor



11

## Overview

### High Q MLCCs



- \* 0201–0805 inch / 0603–2012 mm, 1111 inch / 2828 mm
- \* COG Dielectric
- \* Low ESR

### Broadband Capacitors



- \* 1005–0402 inch / 0402–1005 mm
- \* Up to 67 GHz
- \* X7R / X7S / X5R
- \* High WVDC

### 3 Terminal Monoblock EMI Filters



- \* 0603–1806 inch / 1608–4516 mm
- \* High Dielectric Ceramic
- \* Multilayer & Bulk Structures
- \* 16 Volts to 100 Volts

### Large Capacitance MLCCs (Small Size)



- \* 0201–0603 inch / 0603–1608 mm
- \* High Reliability
- \* X7R, X7S dielectric base

### Large Capacitance MLCCs (Large Size)



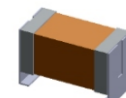
- \* 0805–1210 inch / 2012–3225 mm
- \* High Reliability
- \* X7R, X7S dielectric base

### High Power MLCCs (Ni COG based)



- \* 1206–3640 inch / 3216–90100 mm
- \* Highly temp. & DC Bias stability
- \* 200–2kV

### High Power MLCCs (X7T Based-Metal frame)



- \* 1206–2220 inch / 3216–5750 mm
- \* Excellent ripple current characteristics
- \* Pseudo-cubic para-electrics material

2

## High Q MLCCs

### Features



### 【 Low ESR 】

- \* Various Sizes
- \* High Working Voltages
- \* RoHS Compliant
- \* High Self Resonant Frequencies
- \* Stable COG Dielectric

### Product Family

Part Number	Size		WVDC (V)	Capacitance Range	Operating Temperature (□)
	EIA (inch)	JIS (mm)			
A6 □ Z100JT200T	0201	0603	200	0,1~10pF	0 : 125°C 4 : 200°C
A6 □ L100JT200T	0402	1005	200	0,1~27pF	0 : 125°C 4 : 200°C
A6 □ S100JT250XT	0603	1608	250	0,1~100pF	0 : 125°C 4 : 200°C
A6 □ F100JT250XT	0805	2012	250	0,1~240pF	0 : 125°C 4 : 200°C
A80B100JT500XT	1111	2828	50~500	1,0~1000pF	125°C
A80C100JT500XT	2 3 2 5	5864	100~500	1,0~1000pF	125°C
A80E100JT500XT	3 8 3 8	9797	500~3600	0,5~5100pF	125°C

### Applications

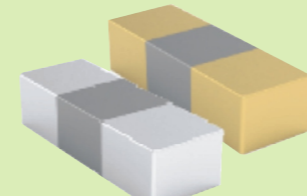


- \* Cellular Base Stations
- \* Satellite Communications
- \* 5G CPE
- \* Broadband Wireless Services
- \* WiMAX (802.16)

3

## Broadband Capacitors

### Features



### 【 Proprietary Design 】

- \* Wide Range of Sizes
- \* Low Insertion Loss
- \* Flat response to 67 GHz
- \* RoHS Gold or RoHS Tin Plating
- \* High WVDC Up to 50 Volts

### Product Family

Part Number	Size		Dielectric Material	WVDC (V)	Capacitance	Frequency Range	Termination Option (□)
	EIA (inch)	JIS (mm)					
ABCUA06F0XX103M □ DG	01005	0402	X5R	6,3	0,01uF	40 GHz+	N : Sn G : Au
ABCUA06F0XX473M □ DG	01005	0402	X5R	6,3	0,047uF	40 GHz+	N : Sn G : Au
ABCUC06F0XX104M □ DG	01005	0402	X5R	6,3	0,1uF	67GHz+	N : Sn G : Au
ABCUA06F0XX104M □ DG	01005	0402	X5R	6,3	0,1uF	40 GHz+	N : Sn G : Au
ABCUA10201X103P □ DG	0201	0603	X7S	10	0,01uF	40 GHz+	N : Sn G : Au
ABCUC16201X104K □ DG	0201	0603	X7S	16	0,1uF	67 GHz+	N : Sn G : Au
ABCUA16201X104K □ DG	0201	0603	X7S	16	0,1uF	40 GHz+	N : Sn G : Au
ABCUA16S02X104K □ DG	0402	1005	X7R	16	0,1uF	40 GHz+	N : Sn G : Au
ABCUA50S02X104K □ DG	0402	1005	X7R	50	0,1uF	40 GHz+	N : Sn G : Au

### Applications

- \* Optical Communication Systems
- \* High Speed Digital Data

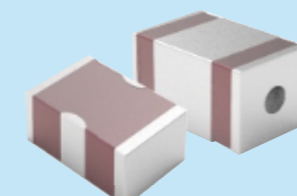


SFP, SFP+

4

## 3 Terminal Filters

### Features



### 【 Wideband EMI Solution 】

- \* Various Sizes
- \* High Current
- \* Low ESL
- \* RoHS Compliant

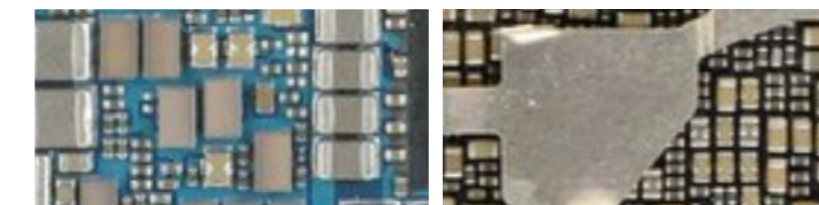
### Product Family

Part Number	Size		WVDC (V)	Rated Current	Capacitance
	EIA (inch)	JIS (mm)			
AFC16S03A22MCD	0603	1608	16	1A	0,022uF
AFC16S03A104MPD	0603	1608	16	2A	0,1uF
AFC25S06C155MPL	1806	4516	25	6A	1,5uF
AFC50S06C105SPL	1806	4516	50	6A	1,0uF
AFX1BS10F102SPL	1210	3225	100	20A	0,001uF

- AFC : Feedthru Capacitor
- AFX : Feedthru Capacitor Coaxial

### Applications

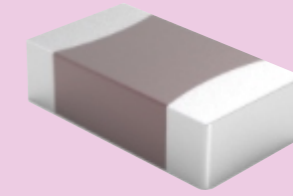
- \* EMI filter for Power & Signal Integrity



5

## Large Capacitance MLCCs (Small Size)

### Features



### 【 High Reliability 】

- \* Stable X7R, X7S Dielectrics
- \* 0201–0603 inch / 0603–1608 mm
- \* RoHS Compliant

### Product Family

Part Number	Size		WVDC (V)	Dielectric Material	Capacitance
	EIA (inch)	JIS (mm)			
ACS01X06N104KNDG	0201	0603	6,3	X7R	~1,0uF
ACS01X10N104KNDG	0201	0603	10	X7R	~1,0uF
ACS01X16N104KNDG	0201	0603	16	X7R	~1,0uF
ACS02X06N225KNDG	0402	1005	6,3	X7R	~2,2uF
ACS02X10N225KNDG	0402	1005	10	X7R	~2,2uF
AC202X16N225KNDG	0402	1005	16	X7S	~2,2uF
ACS02X25N104KNDG	0402	1005	25	X7R	~0,1uF
ACS02X50N104KNDG	0402	1005	50	X7R	~0,1uF
ACS02X1BN103KNDG	0402	1005	100	X7R	~0,01uF
ACS03X06N106KNDG	0603	1608	6,3	X7R	~10uF
ACS03X10N106KNDG	0603	1608	10	X7R	~10uF
ACS03X16N475KNDG	0603	1608	16	X7R	~4,7uF
ACS03X25N225KNDG	0603	1608	25	X7R	~2,2uF
ACS03X50N474KNDG	0603	1608	50	X7R	~0,47uF
ACS03X1BN104KNDG	0603	1608	100	X7R	~0,1uF
ACS03X2BN103KNDG	0603	1608	200	X7R	~0,01uF

### Applications



- \* Mobile, Semiconductor
- \* Low voltage DC/DC converter
- \* Power control units
- \* Low voltage DC-link, rectifier circuits

6