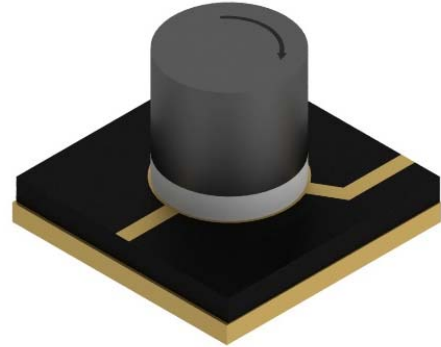


Document	Document Number	Revision	Date
Specification	CAT15001700AA	A	04-Aug-2021

Part Number: CAT15001700AA

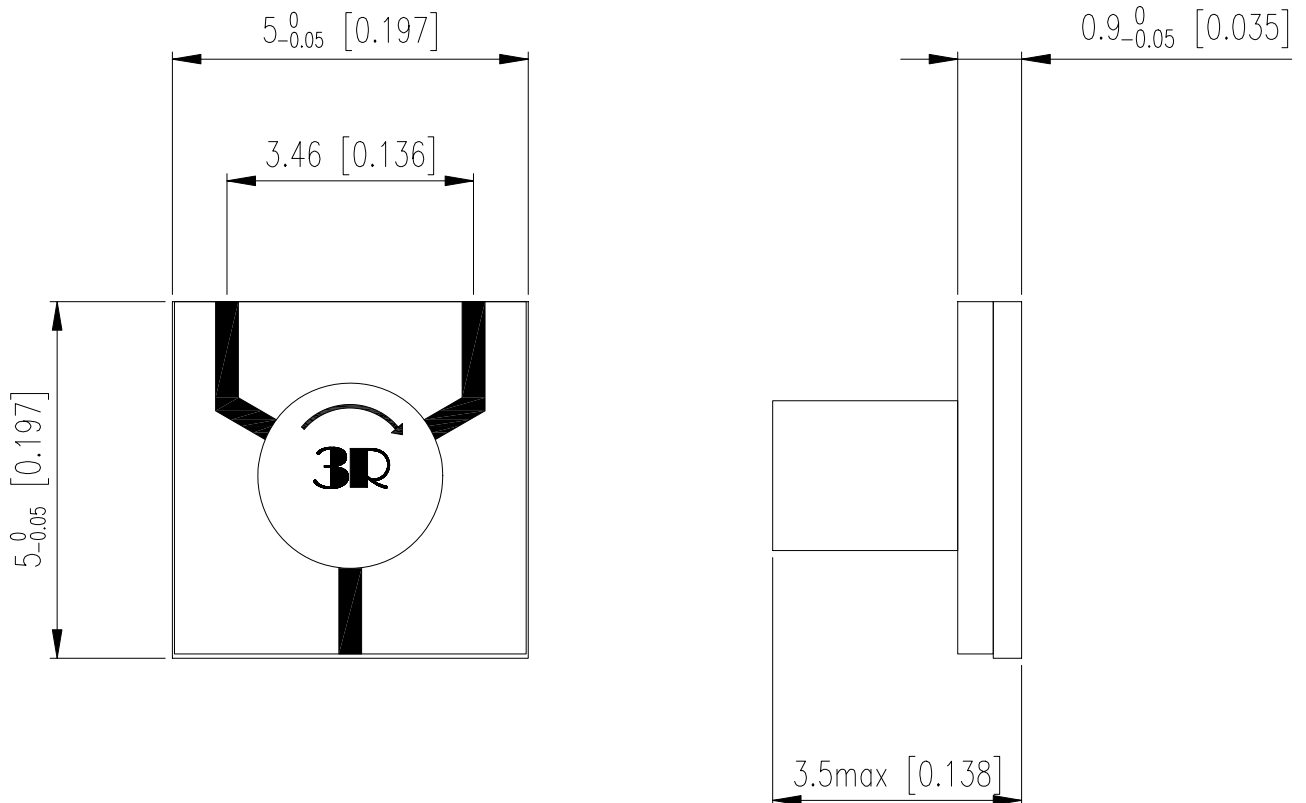
Features:

- Product Type: Microstrip Circulator
- Frequency Range: 15.0 – 17.0 GHz
- Rotation: Clockwise
- Insertion Loss: 0.5 dB Typical
- Isolation: 21 dB Typical
- Return Loss: 21 dB Typical



	Part Number
Clockwise	CAT15001700AA
CounterClockwise	DAT15001700AA

Dimensions:





Document	Document Number	Revision	Date
Specification	CAT15001700AA	A	04-Aug-2021

Electrical Specification:

Parameter	Unit	Min.	Typ.	Max.	Condition
Frequency Band (f)	GHz	15.0		17.0	
Impedance	Ω		50		
Operating Temperature	$^{\circ}\text{C}$	-40		85	
Insertion Loss (IL)	dB		0.5	0.6	
Isolation	dB	17	21		
Return Loss (RL)	dB	17	21		
Average Power	W	-	-	10	

Note:

- The devices should be mounted on the Non Magnetic carrier or base with the minimal thickness of 1mm.
- Mounting: 150 $^{\circ}\text{C}$ @60min
- RoHS and REACH compliant
- Plating: Gold with RoHS compliant.
- Tuning conductor (97In3Ag) can be applied at optional location determined by vendor.
- Humidity: 5 to 95% non-condensing
- Max temperature during welding process: +350 $^{\circ}\text{C}$ @25 msec.

Document Revision Information:

Revision	Description	Date
A	Initial Release	04-Aug-2021